



**A COATING COMPANY THAT CARES  
THE WORLD OVER**



**COOPER COATED COIL**

WORLD LEADING COATING TECHNOLOGY

# SUSTAINABILITY

---



**Sustainability  
is at the heart  
of our  
business**

**At Cooper Coated Coil we take sustainability seriously.** Our responsibility as an international manufacturing business stretches around the world to our customers, our suppliers, our employees, our communities and our world.

We put sustainability at the heart of our business; from the resources we use and the application of our processes to the minimising & recycling of the waste that we generate.

Our focus is built upon five points that form the basis for all our activities sustainability

- **Raw Materials**
- **Our Process**
- **Customer Benefits**
- **Waste Management**
- **Our People**



# RAW MATERIALS - METALS

---

**With its high rate of recyclability, steel is the ideal material for a sustainable, circular economy. It is also a key enabler for CO2 emissions**



Steel and Aluminium are the most commonly used metals in the CCC process and both are 100% recyclable. They are permanent materials meaning they are used; not consumed.

They can be recycled over and over again, without loss of properties. This multiple recycling is true circularity and it is estimated that 75% of steel products ever made are still in use today.

Due to the exacting needs of the metal, the recycled content of metal substrates we use is modest, however 85-90% of steel products are recovered at their end of life and recycled into new steel for railway and construction products.

These high levels of recycling (when compared to making new) reduces energy, emissions and water consumption plus saves on natural resources.

# RAW MATERIALS - COATINGS

---



Over  
**90%**  
Coatings  
Transfer Rate

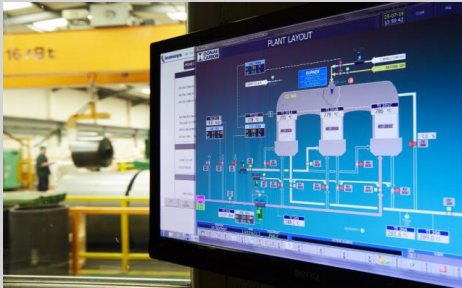
Coatings are chemically complex, so the environmental controls and standards set by CCC are of critical importance.

Our coatings fulfil numerous statutory and regulatory requirements for food contact. We avoid coatings that contain raw materials considered as harmful substances specified in the SVHC list of the REACH regulation of the EU.

In 2012, CCC committed to take only coatings that have been made without the use of PFOA and BPA was eliminated for all new coatings in 2016. We are further committed to be 100% free of NMP coatings by 2022.

The utilisation of coatings at CCC is over 90% coming from efficiency of the process and the quality of the inputs. Sustainability and quality go hand in hand.

# COIL COATING APPLICATION



**Our coating process sees application transfer rates of over 90% compared with approx. 50% for spray applications...less waste!**

**Energy  
Consumption  
Reduced  
50%**

The industrial scale of our application method means that it is the most environmentally friendly process as it minimises emissions of volatile organic compounds (VOC's), reduces the use of chemicals, water and energy, and the amount of waste generated.

To mitigate the harmful effects of VOC's, CCC partnering with Carbon Trust, installed a Regenerative Thermal Oxidiser (RTO) that destroys the VOC gases released in the process to prevent them from entering into the atmosphere. At operational temperature the RTO uses the VOC's as a fuel to destroy itself and then captures the energy generated in this process and returns this recovered heat back into the ovens.

Water is used to cool the coated metal strip as it comes out of the oven. This is held in a closed loop system for a timed period and is then returned to the environment cleaned and re oxygenated as monitored by our local water authority.

# CUSTOMER BENEFITS

---

**Critically the use of prepainted metal allows the manufacturer to concentrate on their core competencies with CCC handling the complexities of the coating application in a safe and responsible manner.**



Our process delivers to customers a pre coated metal, cut to the perfect size ready for use. This enables improvements in productivity and yield while manufacturing, energy, inventory and financial costs are reduced.

There are huge benefits for manufacturers to be able to eliminate their paint lines. Organisationally this can often remove a bottleneck in their operation , minimise capacity constraints and potentially improving ROCE. Material is ready to use, without any need for lubrication and with yields and time maximised

The management of complying with environmental regulations is also significantly reduced, or even eliminated as is the disposal of hazardous waste associated with the painting operation.

# WASTE MANAGEMENT

---

**Recycled  
paint  
provides fuel  
for cement**

**Sustainability doesn't happen by accident. It must happen by design and this is particularly true in how we plan for and manage the waste that is generated by our process.**

Through advance planning we aim to utilise 95% of all metal and 90% of all coatings. Any waste is completely recycled with coatings made into viable solvents and fuel for firing cement kilns.

Packaging materials contain timber that is only sourced from FSC accredited suppliers and much of the steel wrapping is our own recycled coated metal.

Waste reduction is an important part of our ISO14001 accreditation. All waste is separated and recycled responsibly wherever possible.



# OUR PEOPLE... OUR COMMUNITIES

---



**A business cannot function without people. Our customers, our suppliers, our employees and their communities are all an integral part of our business and we have important responsibilities.**

The move to new offices and blanking facility at Steelpark Way allowed us to provide much improved working conditions for all of our employees in the business.

We encourage employees to propose causes in the local community that promote healthy activities and would benefit from our support. These can range from the supply of kit to junior sports teams to financial support for up and coming athletes of the future.

Much of what we strive to do is to minimise our impact on the environment through our policies on sustainability. Our aim is to expand our community support further into areas of environmental sustainability and we look forward to reporting on the progress we are making.





Cooper Coated Coil Limited  
4 Steelpark Trading Estate  
Steelpark Way  
Wolverhampton WV11 3BF  
Tel: +44 1092 867900  
[www.coopercoated.co.uk](http://www.coopercoated.co.uk)

